

GEOLOŠKA POVIJEST PAGA

Jasenka Sremac

TUMAČ OZNAKA

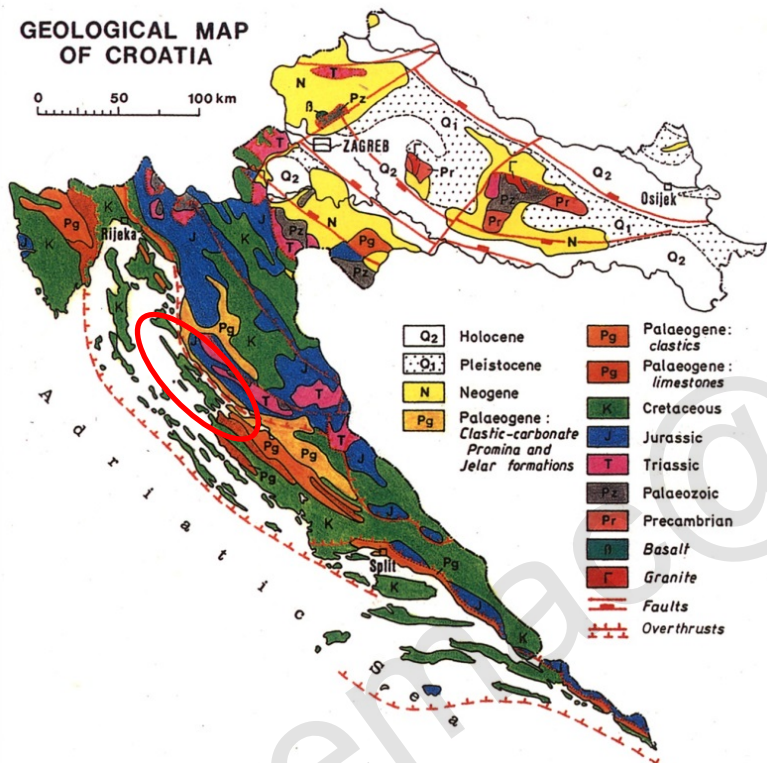


Deluvij :

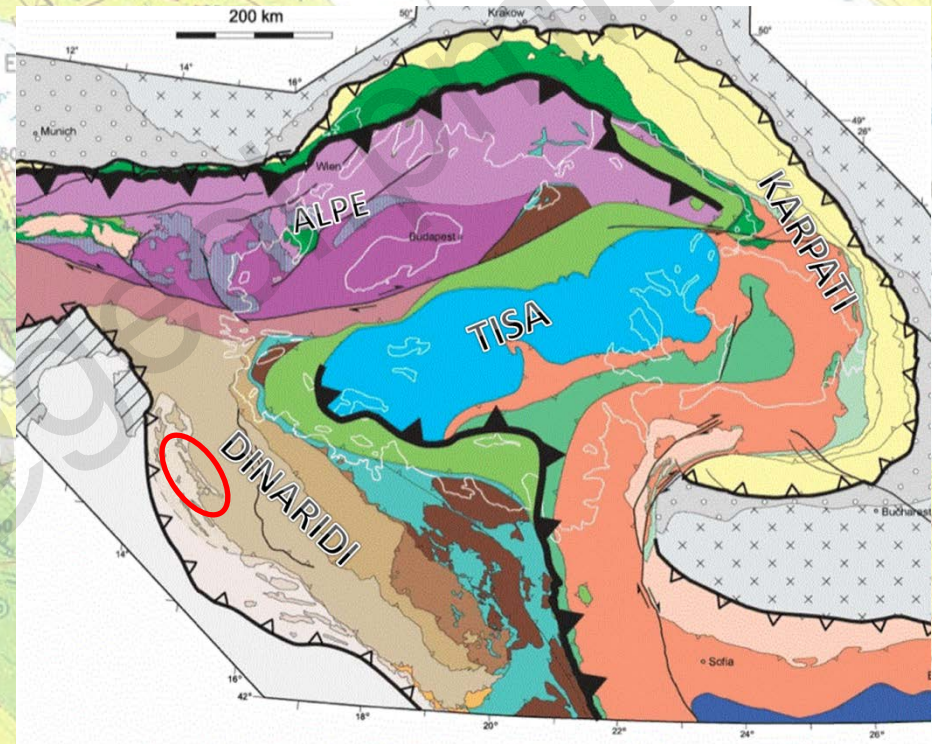
Lapori

Predavanja J. Sremac

PAG KAO DIO KRŠKIH DINARIDA



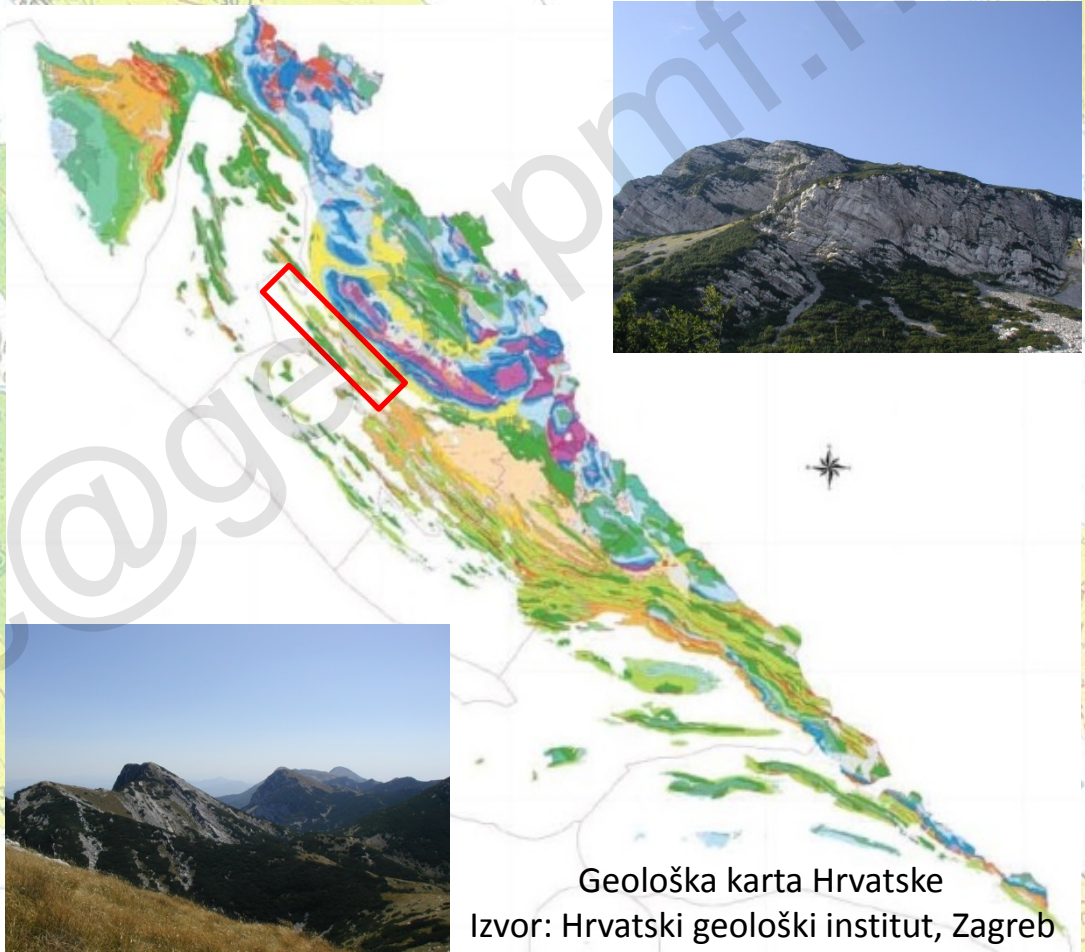
Geološka karta Hrvatske,
Velić, I. & Velić, J., 2000



Tektonske jedinice šireg područja
Ustaszewski et al., 2008

GEOLOGIJA DINARIDA

ERA	PERIOD	mil god.	
Kenozoik	Kvartar	0,0117	
	Neogen	Pliocen	2,588
		Miocen	5,332
	Paleogen	Oligocen	23
		Eocen	34
		Paleocen	56
	Mezozoik	Kreda	65
		Jura	145
		Trijas	199
		Perm	251
Karbon		299	
Paleozoik	Devon	359	
	Silur	416	
	Ordovicij	440	
	Kambrij	488	
	Proterozoik	542	
Pretkambrij	Arhaik	2500	
		4000	
	Had	4600	

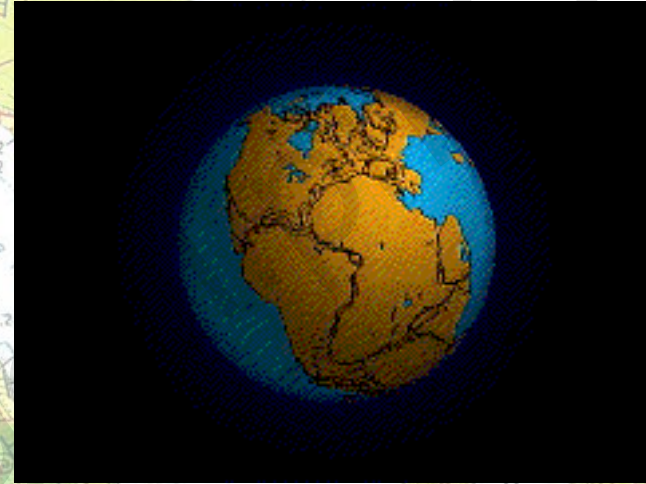
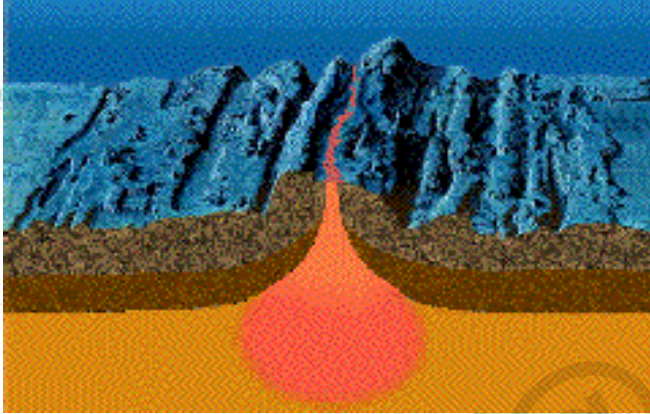


Geološka karta Hrvatske
Izvor: Hrvatski geološki institut, Zagreb

<http://geol.pmf.hr/~jsremac/>

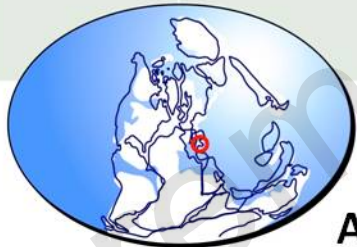
DINARIDI I TEKTONIKA PLOČA

Nadogradnja oceanskoga dna i tektonske ploče



<http://geomaps.wr.usgs.gov>

PALEOZOIK



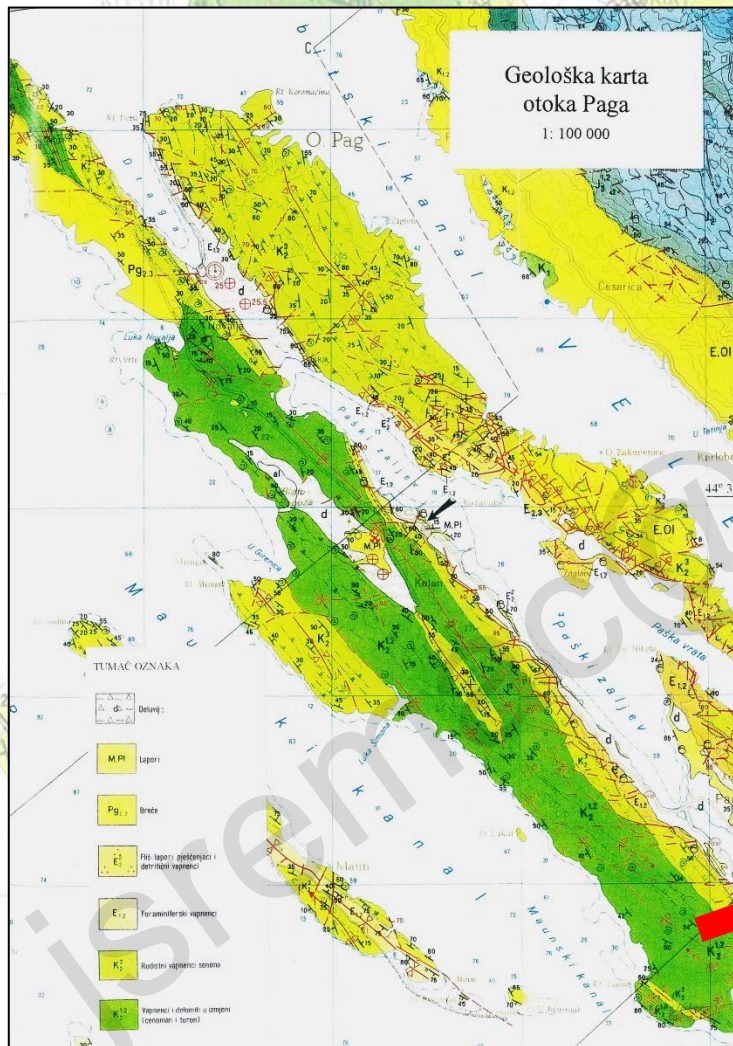
MEZOZOIK



Položaj Krških Dinarida u rasponu od 300 milijuna godina (karbon) do 90 milijuna godina prije današnjice (kreda).

Sremac & Karaica, u tisku

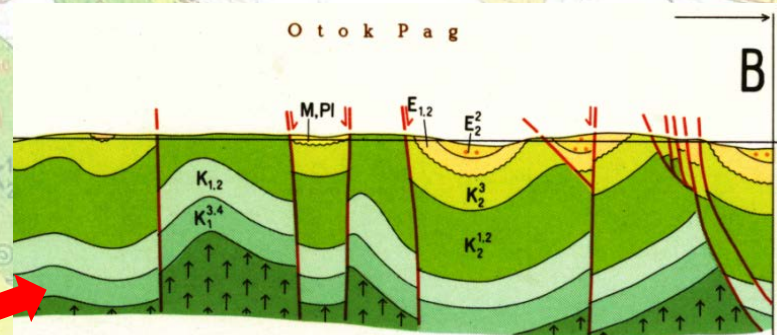
GEOLOŠKA KARTA I PROFIL



Jurišić-Polšak i Bulić, 2007

Geološka karta prikazuje rasprostiranje stijena različite starosti na površini Zemlje.

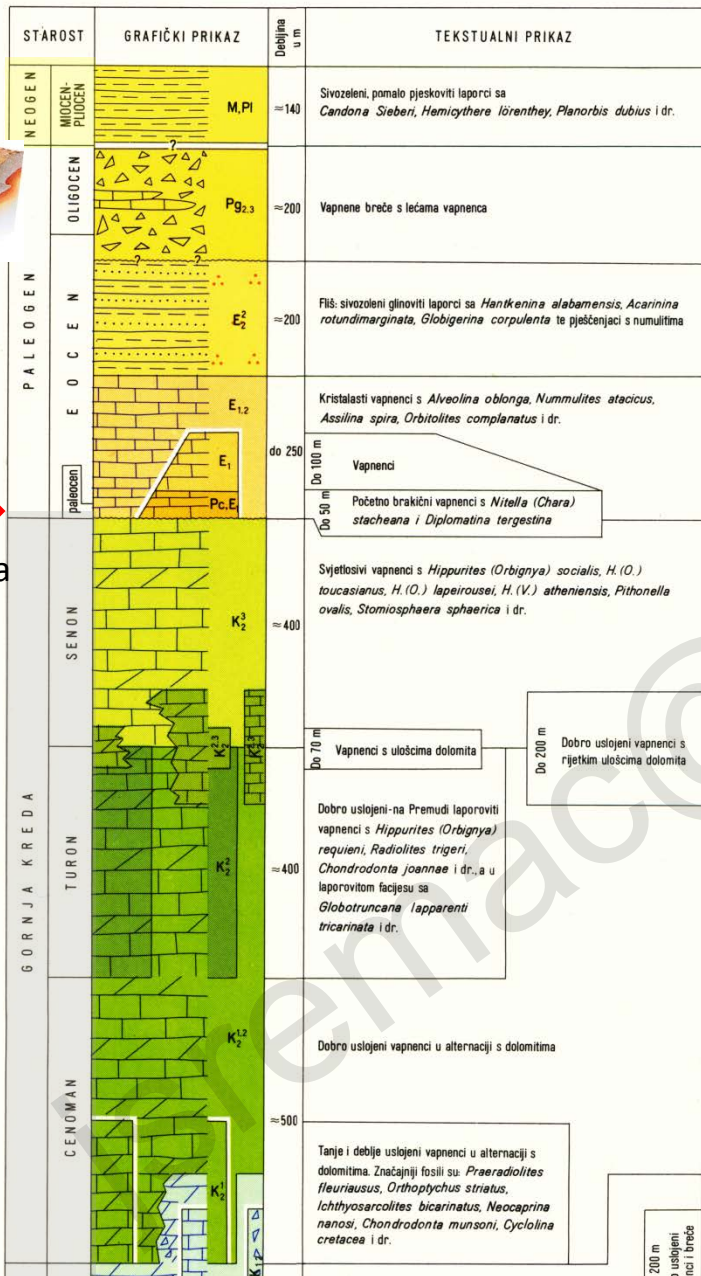
Geološki profil prikazuje strukturu i položaj slojeva ispod Zemlje.



Mamužić et al., 1970

GEOLOŠKI STUP

1:10 000



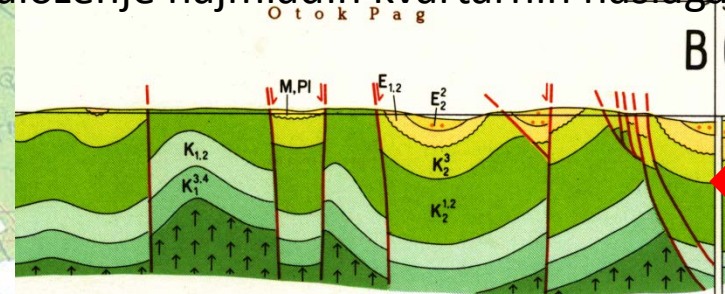
Emerzija



GEOLOŠKI STUP I PROFIL KROZ OTOK PAG

Redoslijed zbivanja:

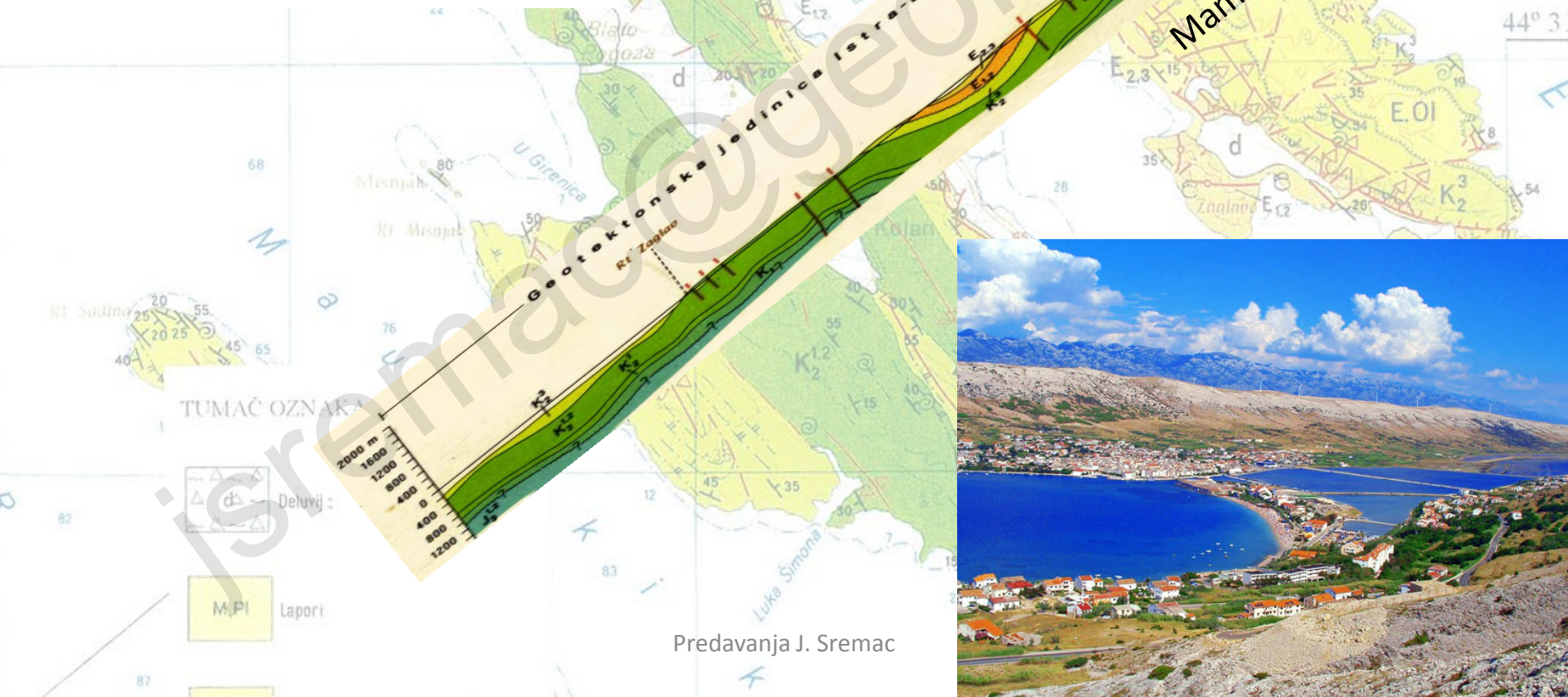
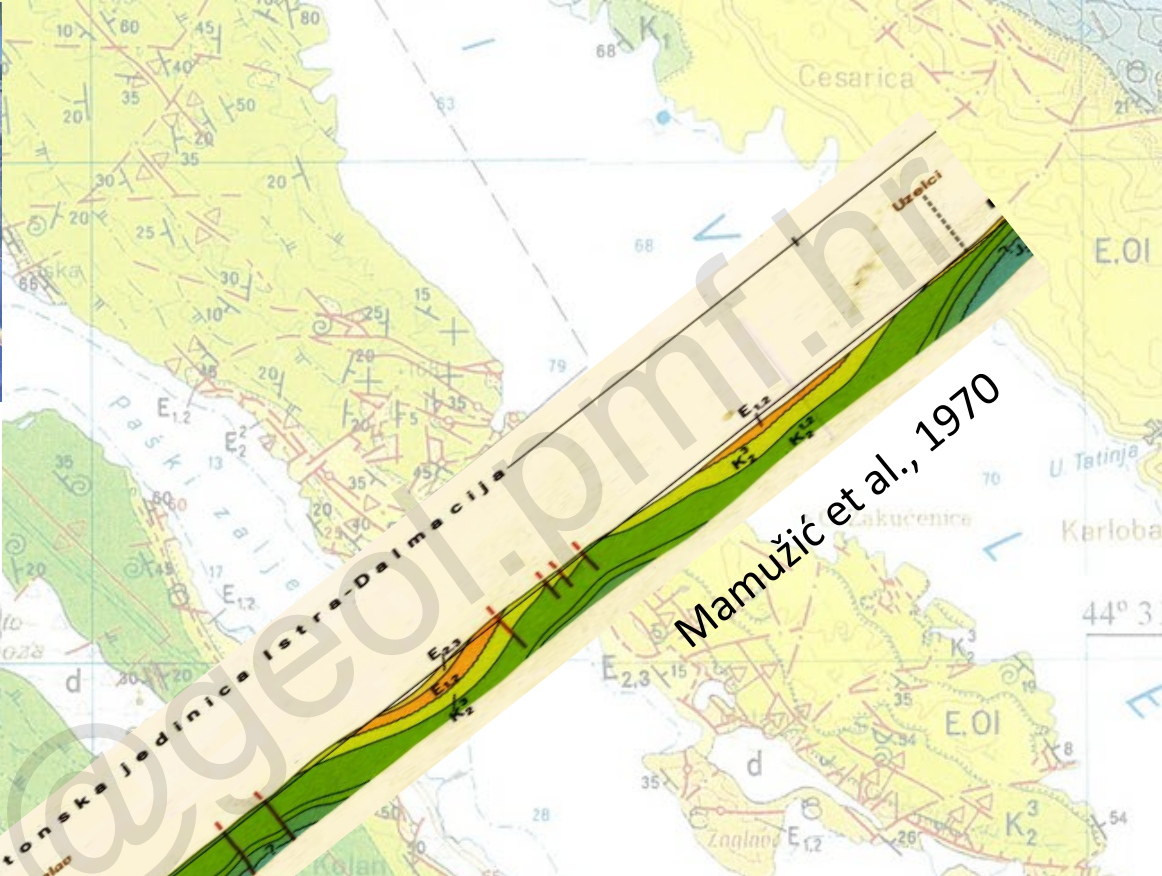
1. Taloženje krednih karbonatnih naslaga
2. Izdizanje i emerzija. Blago boranje
3. Taloženje karbonatnih pa klastičnih naslaga paleogena
4. Izdizanje Dinarida – erozija i taloženje krupno klastičnog materijala
5. Boranje
6. Taloženje jezerskih naslaga miocena
7. Taloženje najmlađih kvartarnih naslaga



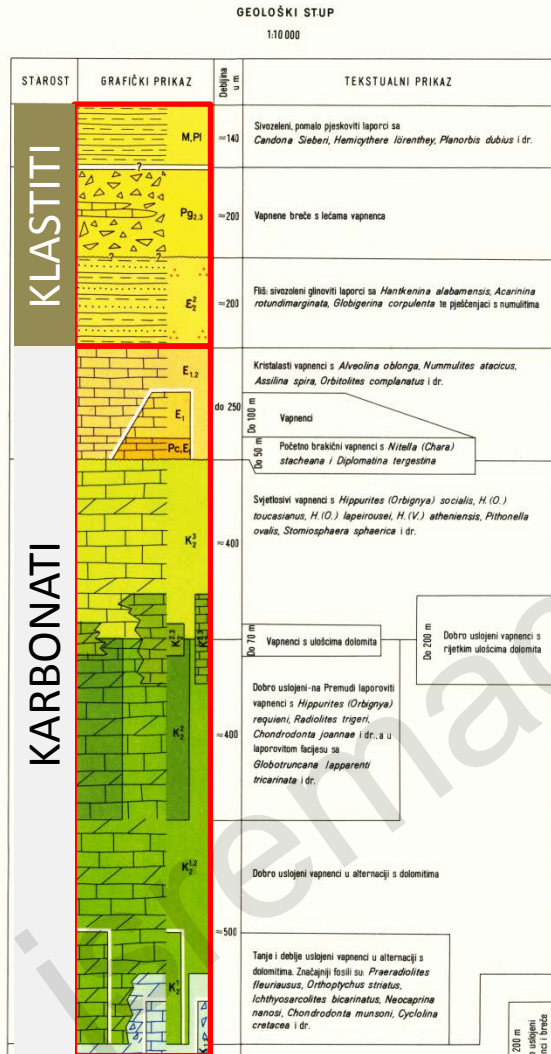
Mamužić et al., 1970



RELJEF OTOKA PAGA SLIJEDI BORANE STRUKTURE



Tip podloge uvjetuje vegetaciju

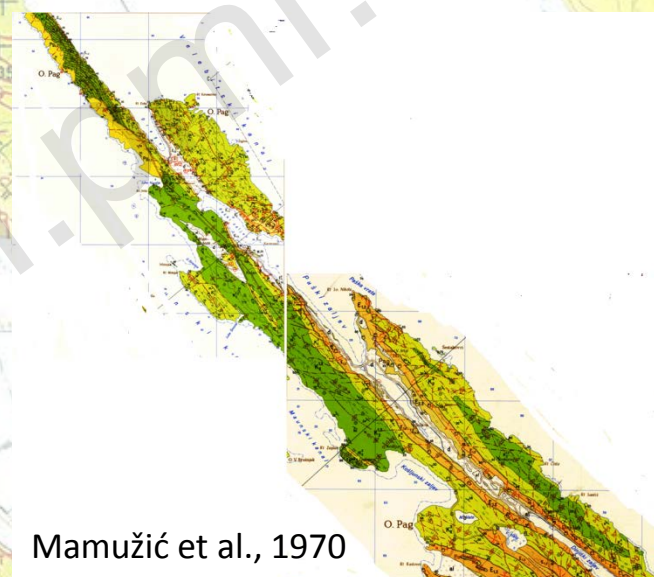
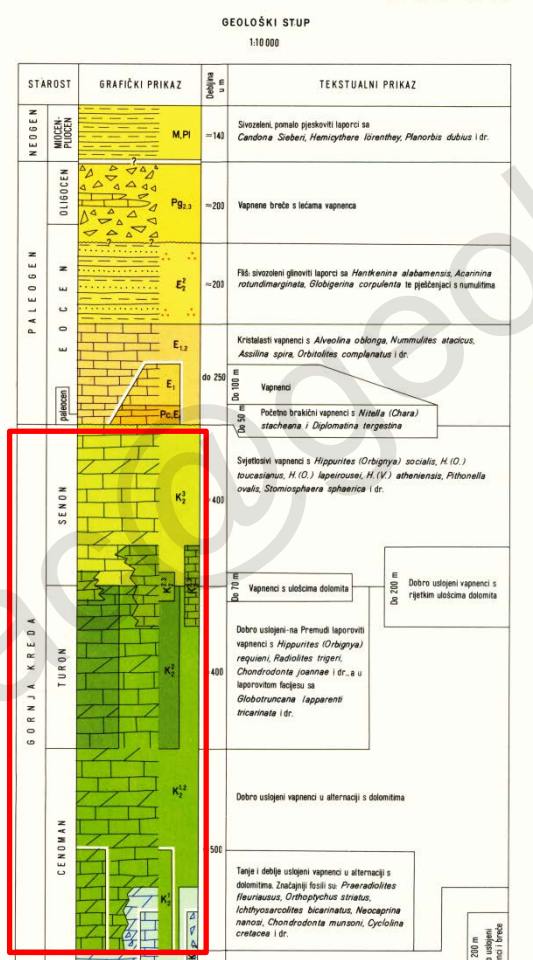
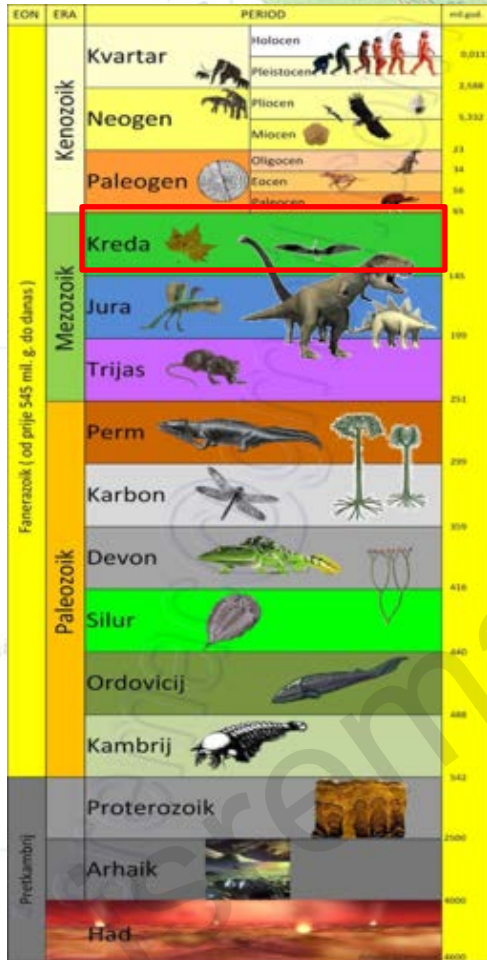


Mamužić et al., 1970

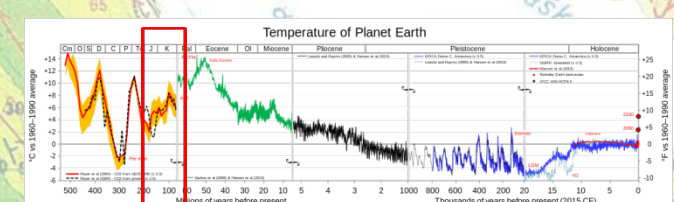
Predavanja J. Sremac

KREDA

(145-66 milijuna godina prije današnjice)



Mamužić et al., 1970

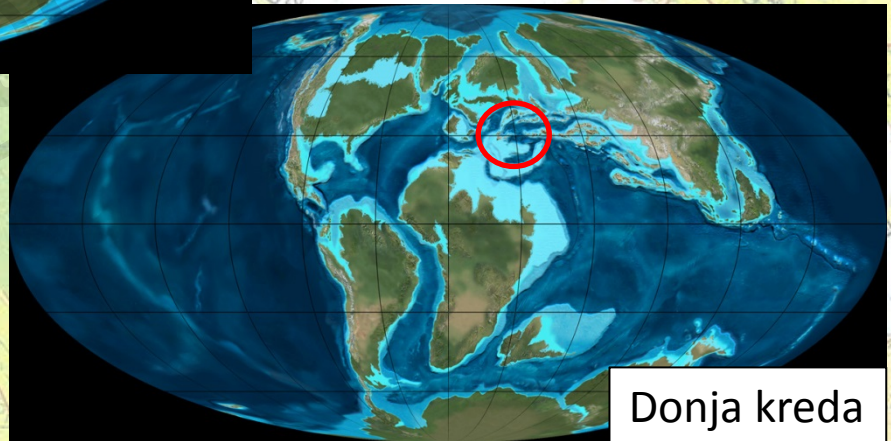
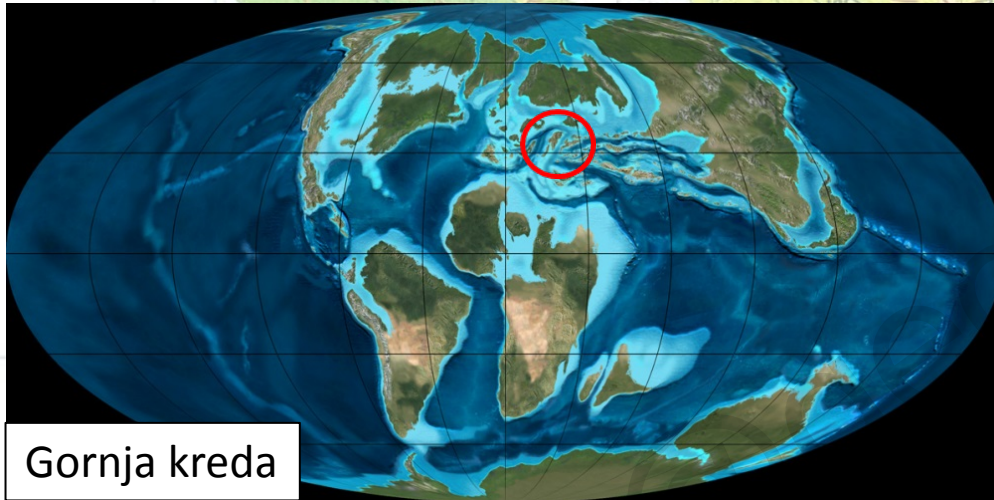


<http://commons.wikimedia.org>

<http://geol.pmf.hr/~jsremac/>

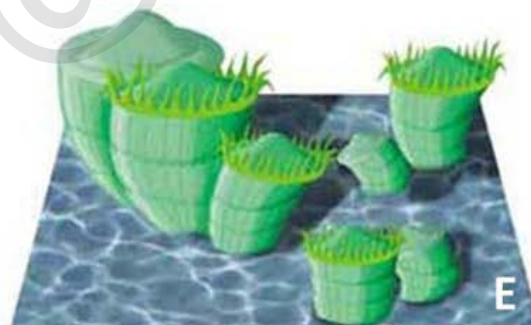
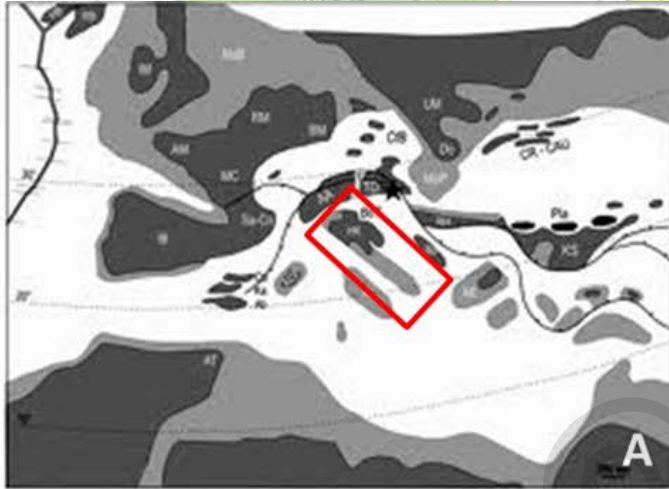
Predavanja J. Sremac

KREDA



R. Blakey, <http://jan.ucc.nau.edu/~rcb7/RCB.html>

KREDA

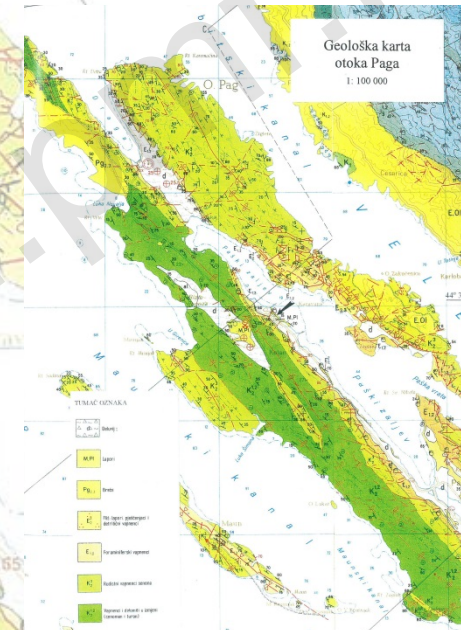
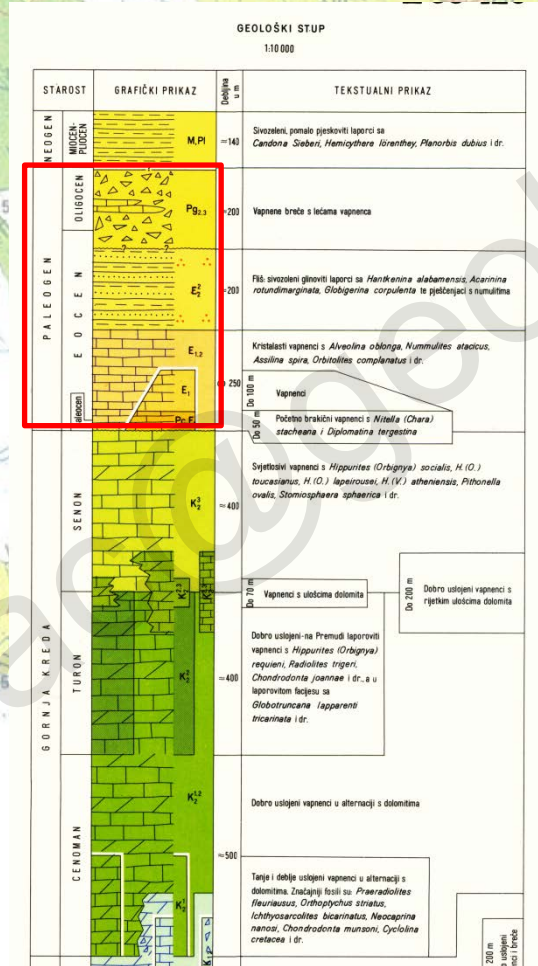
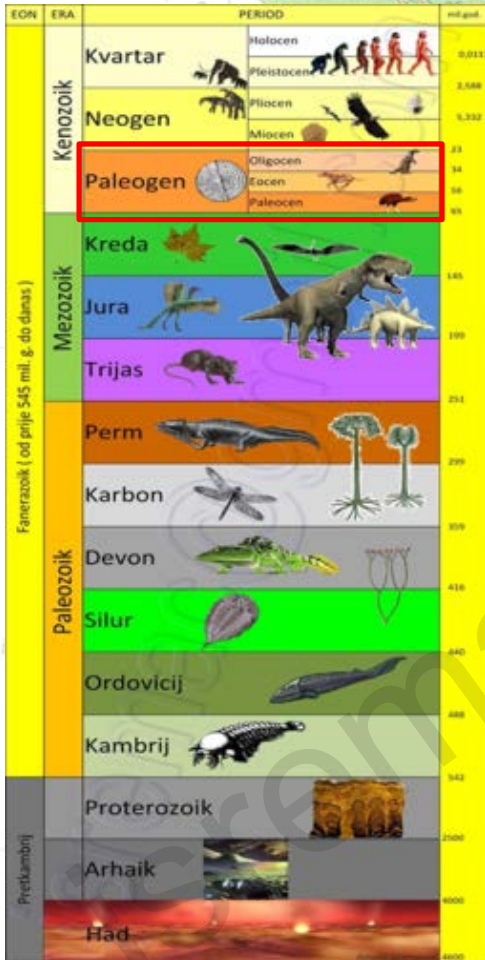


Sremac et al., u tisku

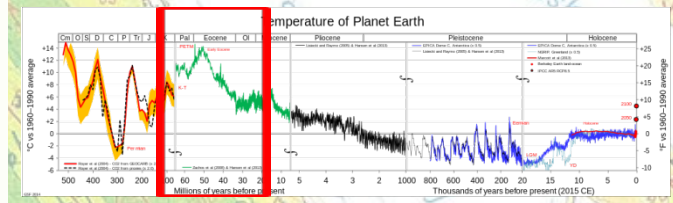
Predavanja J. Sremac

PALEOGEN

(66 do 23 milijuna godina prije današnjice)



Jurišić-Polšak i Bulić, 2007



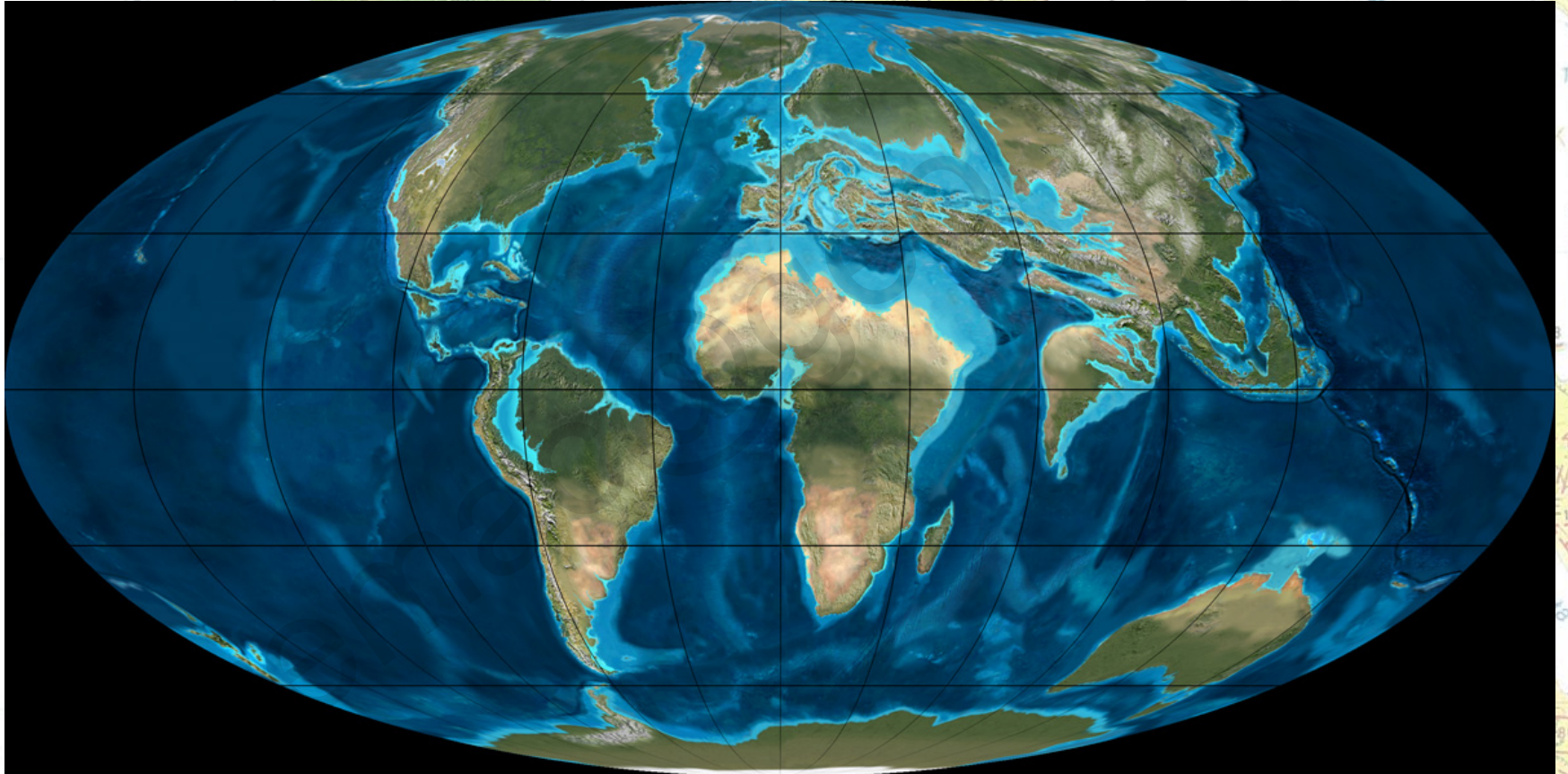
<http://commons.wikimedia.org>

<http://geol.pmf.hr/~jsremac/>

Mamužić et al., 1970

Predavanja J. Sremac

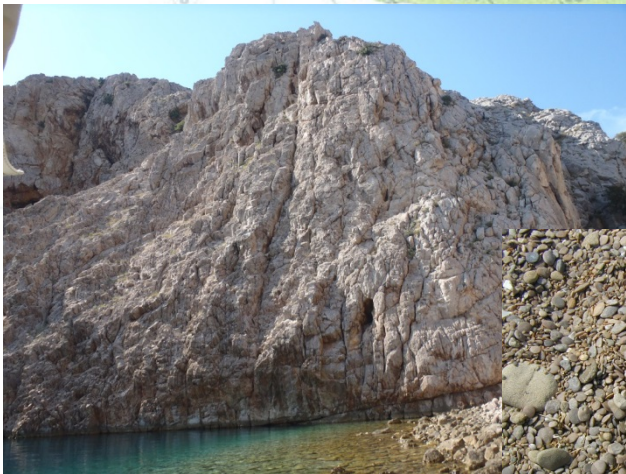
PALEOGEN



R. Blakey, <http://jan.ucc.nau.edu/~rcb7/RCB.html>

PALEOGEN

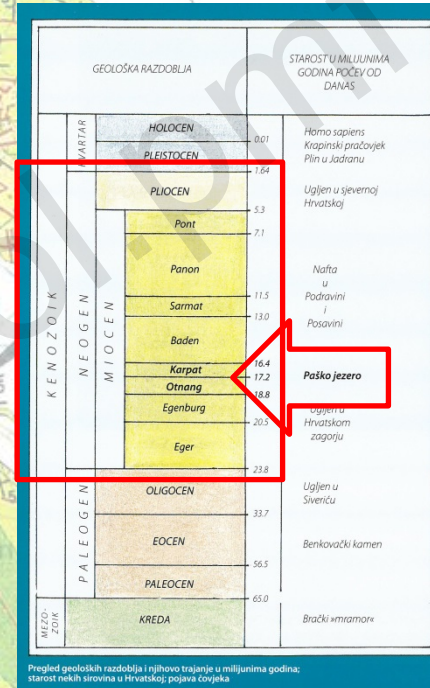
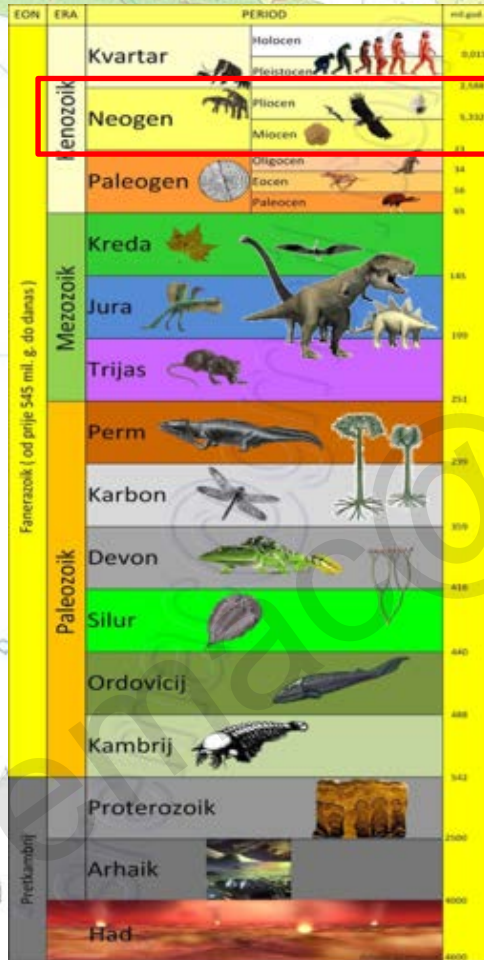
FORAMINIFERSKI VAPNENCI KLASTITI



M, PI Lapori

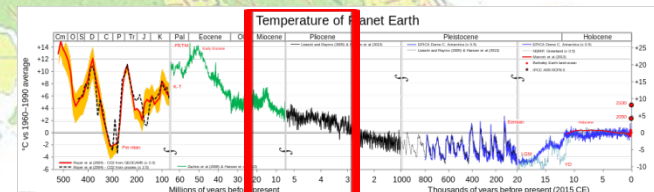
NEOGEN

(23 DO 2,58 milijuna godina prije današnjice)



Pregled geoloških razdoblja i njihovo trajanje u milijunima godina; starost nekih sirovina u Hrvatskoj; pojava čovjeka

Jurišić-Polšak i Bulić, 2007

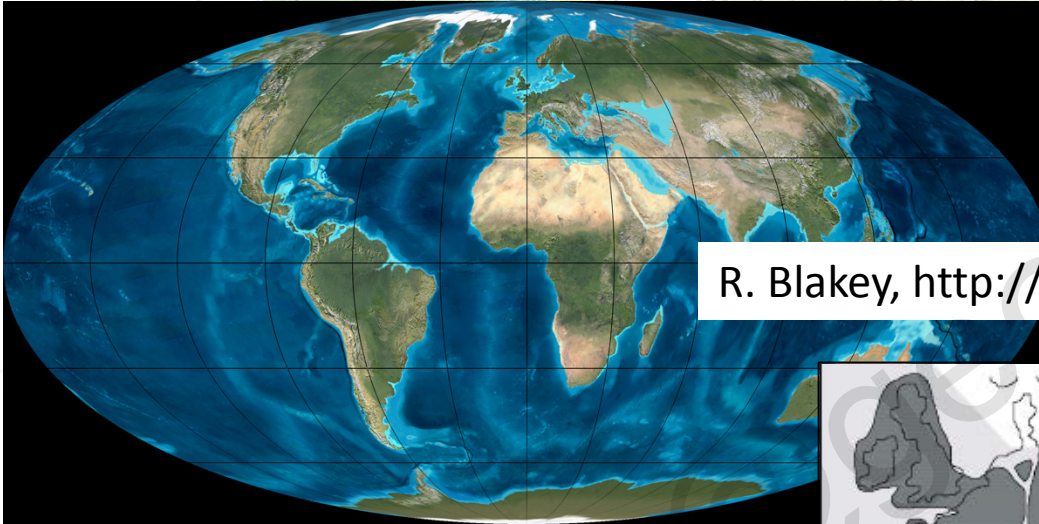


<http://geol.pmf.hr/~jsremac/>

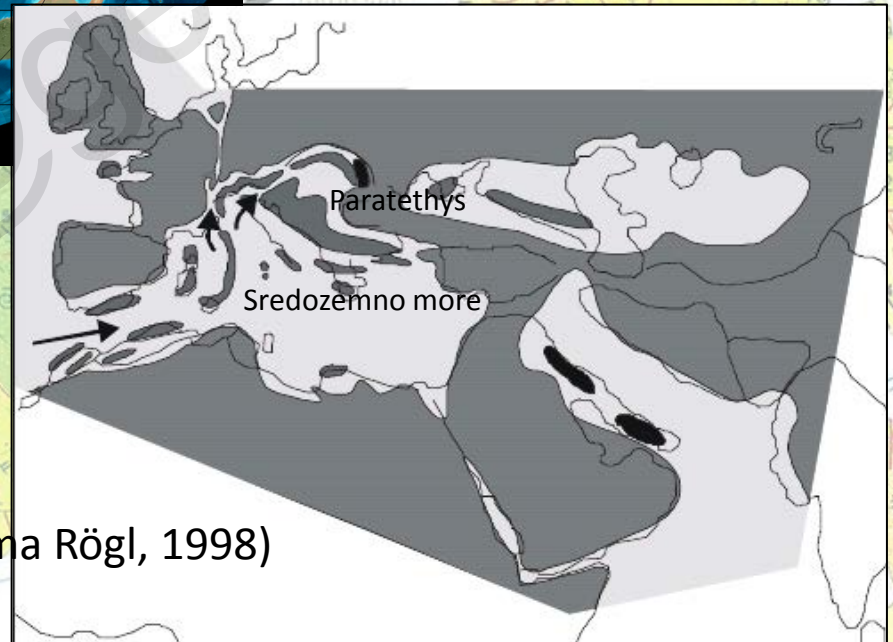
Predavanja J. Sremac

<http://commons.wikimedia.org>

NEOGEN



R. Blakey, <http://jan.ucc.nau.edu/~rcb7/RCB.html>



Paleogeografija Paratethysa prema Rögl, 1998)

TUMAČ OZNAKA



M, PI Lapori

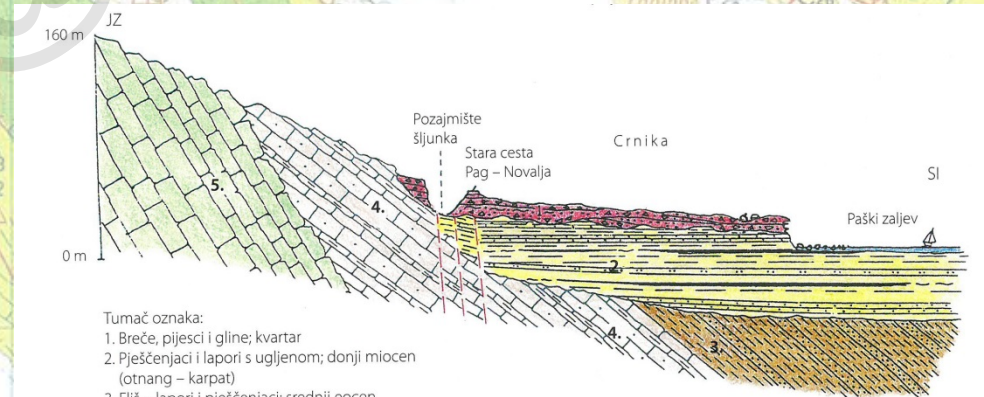
NEOGEN



Kalupi i jazgre školjaka iz skupine kongerija



Melanopsis, šiljasti puž (povećano 6x)



- Tumač oznaka:
1. Breče, pijesci i gline; kvartar
 2. Pješčenjaci i lapori s ugljenom; donji miocen (otnang – karpat)
 3. Fliš – lapori i pješčenjaci; srednji eocen
 4. Foraminiferski vapnenci; donji i srednji eocen
 5. Rudistni vapnenci; gornja kreda (senon) ..

Geološki profil Crnike

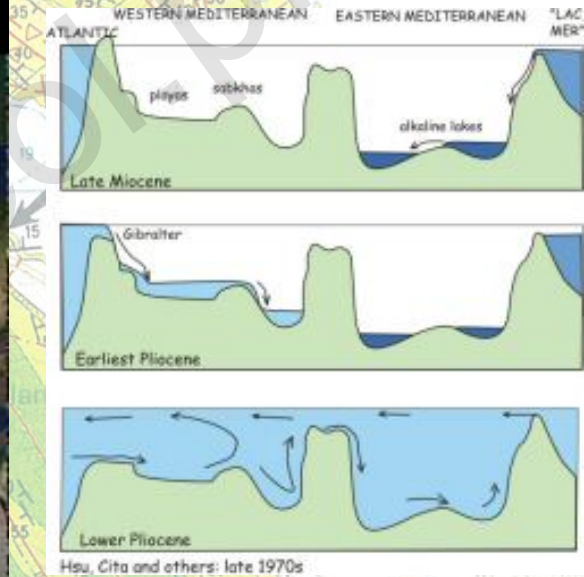
Jurišić-Polšak i Bulić, 2007



Mesinska kriza 5.96 – 5.33 mil.god.



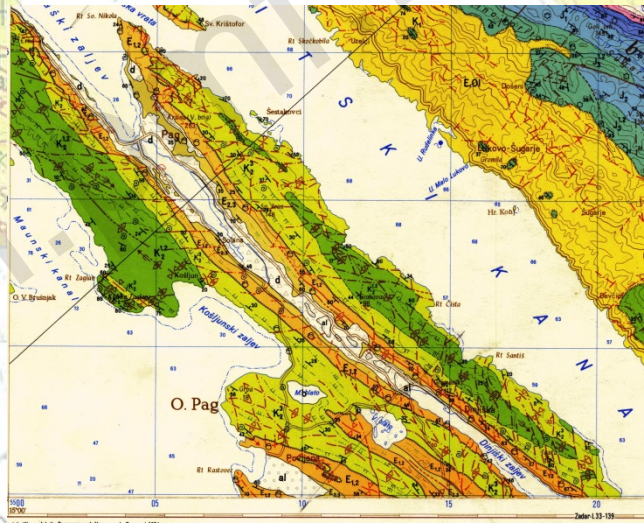
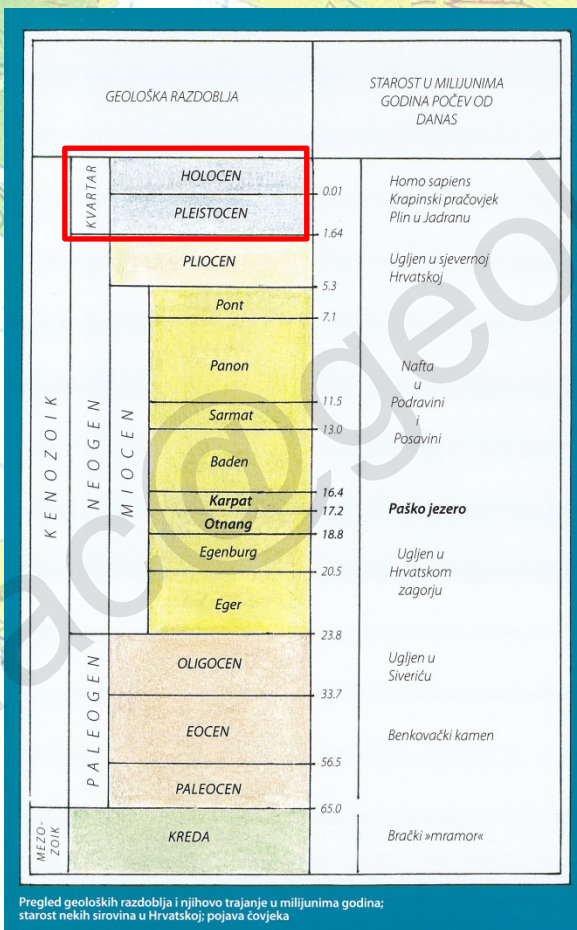
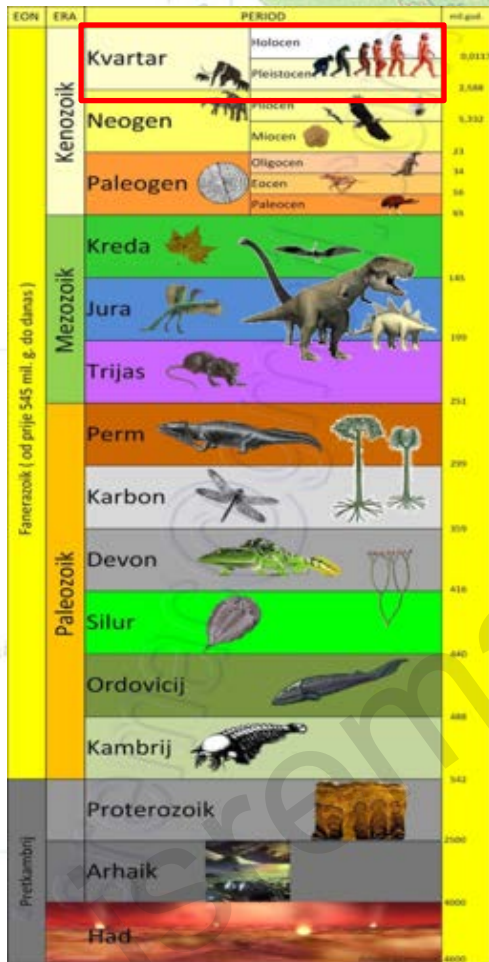
http://i.ytimg.com/vi/bw-qf_zQMWs/hqdefault.jpg



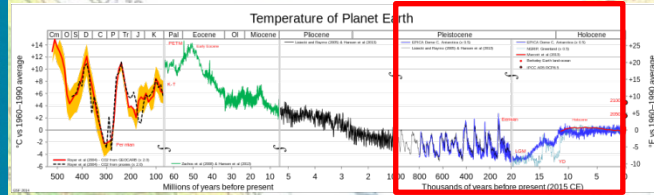
Deluvij :
M, PI Lapori

KVARTAR

(2,58 milijuna godina do danas)



Mamužić et al., 1970



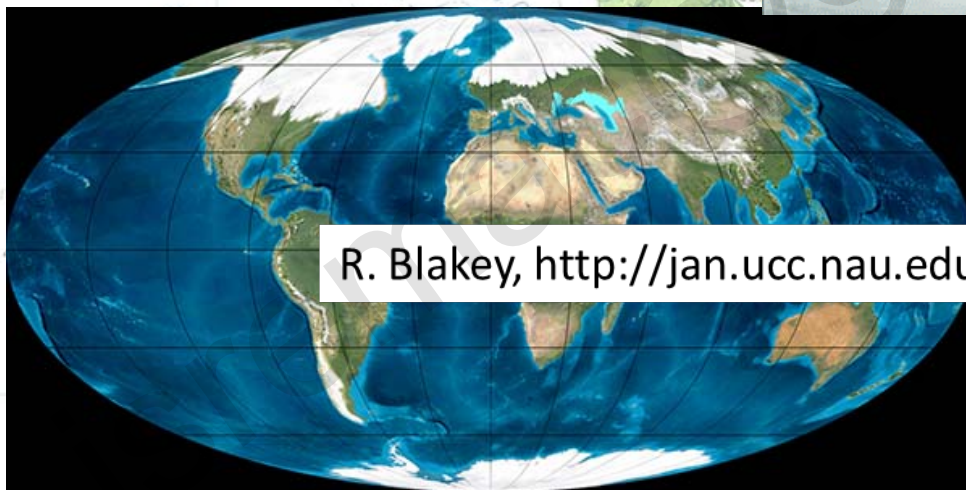
<http://commons.wikimedia.org>

<http://geol.pmf.hr/~jsremac/>

Jurišić-Polšak i Bulić, 2007

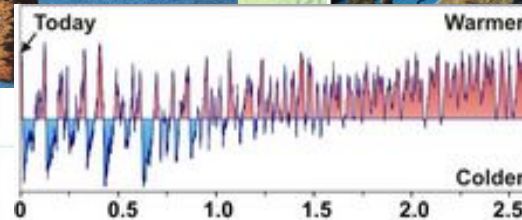
Predavanja J. Sremac

KVARTAR



R. Blakey, <http://jan.ucc.nau.edu/~rcb7/RCB.html>

Oscilacije klime i morske razine u kvartaru



The Quaternary Period (last 2.6 million years)

Predavanja J. Sremac

KVARTAR



IZBOR IZ LITERATURE

- Jurišić-Polšak, Z. & Bulić, J. (2007): Pradavno Paško jezero. Hrvatski prirodoslovni muzej, 63 str, Zagreb.
- Mamužić, P. ; Sokač, B. & Velić, I. (1970): Osnovna geološka karta SFRJ 1: 100 000, list Silba L 33-126. Geološki zavod Zagreb, Savezni geološki zavod, Beograd. 45 p.
- Mamužić, P. & Sokač, B. (1973): Tumač osnovne geološke karte za listove Molat i Silba 1:100 000. Geološki zavod Zagreb, Savezni geološki zavod, Beograd.
- Sokač, B.; Nikler, L. & Velić, I. & Mamužić, P. (1974): Osnovna geološka karta SFRJ. List Gospić L 33-127 1:100 000. Geološki zavod Zagreb, Savezni geološki zavod, Beograd.
- Sokač, B.; Šćavničar, S. & Velić, I. (1976) : Osnovna geološka karta SFRJ. Tumač za list Gospić L 33-127. Geološki zavod Zagreb, Savezni geološki zavod, Beograd.

KONTAKT

- Jasenka Sremac, izv.prof.
- El. pošta: jsremac@geol.pmf.hr
- Mrežna stranica: <http://geol.pmf.hr/~jsremac/>

TUMAČ OZNAKA

